



WEALD VIEWS

In the Three Suttons

May 2021

50p





St Peter & St Paul,
East Sutton Road,
East Sutton,
Kent ME17 3DE

**CHURCH OFFICERS
OF:**

**ST. MARY'S,
SUTTON VALENCE**

**SS. PETER & PAUL,
EAST SUTTON**

**ST. MICHAEL'S,
CHART SUTTON**

Vicar THE REV'D FIONA HASKETT
fiona.haskett@btopenworld.com **01622 891804**
Benefice website: **www.handschurches.org**

Churchwardens

Mr G. James
01622 842681
Mr S. Pereira
01622 843146

Mrs N. Worsfold
01622 843101
Mrs J Ireland
01622 891058

Hon. Secretary PCC

Mrs N Worsfold
01622 843101

Ms H. Knowler
01622 749012

Hon. Treasurer PCC

Mr S. Pereira
01622 843146

Mr A. Hutchinson
01622 843325

Mr C Webb
01622 842629

Organist

Mr G. James
01622 842681

Mr G. James
01622 842681

Captain of Bells

Mr N. Hodgson
01622 863337

Ms H. Knowler
01622 749012

CLERGY LETTER

Dear Friends

As I write this letter, memories of our children's Easter Egg Colouring challenge at Headcorn are still very fresh in my mind – despite the rather cold and miserable weather, about 150 children plus their families took part and all seemed to enjoy the experience.



As we were not able to have our usual hunt around the church and churchyard we had to think of something different. Our idea was quite simple, each child was given a colouring sheet and some coloured pencils. They then had to follow the clues which lead them to the six similar pictures placed around the village – each one of which had a different part coloured in. The aim was to find all six pictures and therefore be able to colour their own sheet in correctly.

Now to be honest, many of you may be wondering what this really has to do with the Easter story – apart from the children having the opportunity to look at the wonderful Easter Garden when they returned to claim their Easter Egg, there really didn't seem to be much of a link. However, it's amazing how many of the children wanted to tell me about the true meaning of Easter...indeed some had brought with them drawings

or little books that they had made at school which charted Christ's journey to the cross, his death and his resurrection and it was wonderful to see what they had created and talk to them about it all. There was, however, much more to it

than that. For a start there is the link between Easter and the promise of new life that is contained within each egg. I know from past experience how much the children are aware of that.

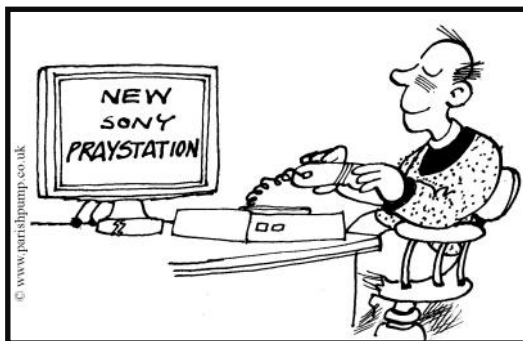
But, I believe there was something else we can draw from this simple little activity. The children started out with a rather boring black and white picture, however, as they journeyed around the village, they were able to colour every last bit of it in until they ended up with something that was vibrant and meaningful. Every different colour was as important as the rest and if just one had not been filled in, the whole picture would have been incomplete and they wouldn't have been able to claim their prize.

When we are first introduced to the person of Jesus Christ, it is as though we are handed a plain and simple black and white drawing of him. Our task, is to get to know the different aspects of his story and in so doing, bring him to life in our hearts and minds by carefully "colouring in" the picture. We are

Continued on next page...

encouraged to look at the many different facets of his life, his birth in a stable in Bethlehem, his early years spent as a refugee in Egypt, his childhood, Baptism, Temptation in the wilderness, his ministry on earth, relationship with his disciples and all those around him, his teachings, miracles and the impact he made on the lives of others and finally his death, resurrection and ascension.

We are called to appreciate how important each one of these is to the whole, and how interdependent they all are in making up the big picture.



But, I believe, our picture will not be complete until we truly appreciate the impact that his story and his picture has on each of us...personally. However, should we be willing to do this, completely and utterly, we are all promised a prize beyond all measure.

Please don't hesitate to contact me if you would like to know more about the person of Christ and the way he can change your life for the better.

Wishing you all a blessed and safe month of May

hane

WEALD VIEWS

Editor	wealdviews@hotmail.co.uk	Graham Haskett	01622 891804
Advertising	ireland.malcolm@gmail.com	Malcolm Ireland	01622 891058
Distribution	goverjames50@gmail.com	Mr G James	01622 842681
Subscriptions	goverjames50@gmail.com	Mr G James	01622 842681

The final deadline for the submission of material is the 14th of the preceding month. Acceptable formats for articles are MS Word, MS Publisher or text files. PDF files can sometimes be used, but as their proportions cannot be altered without distortion, they can't always be used. Suitable picture formats include: Jpeg, BMP, PNG, GIF, etc.

Travelling crosses

We have a supply of beautiful travelling crosses, hand made in Oak by Alan Port, they come in two parts so can be easily transported and stand 6 inches high when put together. £8.00 each available from Fiona. All proceeds to St Peter & St Paul's church, Headcorn.



VANGUARD CONTEMPORARY FLOWER DESIGN GROUP

We are members of the National Association of Flower Arrangement Societies. We meet at Sutton Valence Village Hall five or six times a year for workshops and practical experience under the expert tutelage of national and international demonstrators and teachers in flower-related artistic design.

During the past year under Covid-19 restrictions, we have, of course, been unable to meet in person. Contact with our membership has been maintained in various ways via the Internet. Initially our Committee proposed a number of monthly challenges to encourage member participation in creating designs at home and to photograph and share them on our Facebook page. More recently, we have enjoyed contact via Zoom, when two of our scheduled speakers, Nick Grounds and Linda Porritt, on separate occasions, demonstrated new ideas and techniques. We were encouraged to utilise these at home in our own designs which, when completed, were photographed and shown on the Facebook page.

Now that lockdown rules are easing, we are keen to resume our live workshops, which we anticipate, and hope, may be possible in June. National speaker and Area Demonstrator, Kathy Stangaard, is scheduled to attend this meeting.

Vanguard extends a warm welcome to new members: membership is open to anyone who is a member of the NAFAS in the Kent area. Any member wishing to develop skills in contemporary design can contact our Secretary, **Cecilia Sleap, on 01303 249582** for details of our 2021 programme and further information on membership.

Good morning everyone and it is so lovely to have a nice sunny morning whilst doing this report. We hope you enjoy the contents.



root flies from your crop of carrots!

ORGANIC GARDENERS also suggest using grass cuttings between

the rows every fortnight. Scattering them regularly seems to confuse the carrot root fly!

VEGETABLES

Sow runner bean seeds outside in areas where the risk of frost after the third week in May is remote. When using poles to support plants, put these in first. If supporting with strings, these can be put up later. We normally run two rows of poles for runner beans mostly right across the allotment this will keep us in a regular supply throughout the season. Plant two or three seeds 5 cm/2 in deep and 10 – 15 cm/4 – 6 in apart at the base of each support. If in rows and supported by strings, sow seeds 15cm/2in deep and in rows 60cm / 2ft apart. Make a double row of poles if space allows in your garden.



Continue to sow peas, carrots, radishes and salad onions. A good tip is to sow onions near the carrots as this will put off any carrot

Deter flea beetles by sowing a thin line of mustard seed around the seedbed where cabbages and other brassica plants are being raised. Earthworms are essential to gardens so do not kill them. They help aerate soil, improve drainage and assist in mixing dead plant and animal remains in the soil.

French beans or low beans as they are known in Norfolk can also be put in from now.

FRUIT

Remove runners from strawberry plants to direct energies into fruit production.

Eradicate weeds from between soft fruits by shallow hoeing.

Continued on next page

Mulch established raspberry canes with well rotted manure or compost to keep the soil moist, cool and nourished. Also mulch black currant bushes, but first ensure that the soil is moist!

If large gooseberry fruits are desired on dessert varieties, thin them slightly.

FLOWERS

ROSES

Keep a careful eye open for aphids on roses. Spray as necessary. We are hoping we will have enough sparrows, robins and blue tits in our garden so we can leave this job to them! Rambler roses will be making long shoots from their bases. Tie these to supports.



BULBS

Where naturalised bulbs are overcrowded, lift, divide and replant them. Where we live in Maidstone our neighbours are very good at sharing out their excess bulbs and often we receive something different as well as passing some of ours on.

Nerine Lilies – feed with Sulphate of Potash in Spring and after flowering (it is difficult to give this a time as they do vary and it is best just to keep an eye on them).

Useful tip gleaned over the years: Spray plastic labels with antibacterial spray to remove print. Leave labels out to dry and re-use when required!

Happy gardening and best wishes from Keith and Jean.

Anaesthetic—As the manager of our hospital's cricket team, I was responsible for sorting out the equipment for the games.

One day as I walked through the surgery department carrying a bat that belonged to one of the surgeons, I passed several patients and their families in a waiting area. I heard one man say to his wife, "Look, darling, here comes your anaesthetist."

DATE FOR YOUR DIARY

North Downs' sponsored Walk on behalf of Cancer Research UK (and your chosen cause)

Organised by the Rotary Club of the Weald of Kent

Sunday 8 August

The North Downs Walk in and around Harrietsham has been an annual event for the past 35 years, until last year when we had to cancel for the first time ever. However, we are determined to put on the event this year. It will be a somewhat different format BUT

- There will still be the choice of 4 routes 1,3 6 and 9 miles, all starting and finishing at Glebe Field, Harrietsham (opposite the church), and taking in the beautiful North Downs
- It will be fully marshalled and signposted with regular checkpoints for you and your dogs to take on refreshments,
- You will still be able to retain 50% of your sponsorship for your own cause or charity.

However due to various restrictions one or two things have had to change;

- We cannot hire Harrietsham Village Hall as it is being used for Covid vaccinations so we are intending using the field opposite the church as the start and finish point using gazebos for registration.
- A knock-on effect is that we cannot provide food this year
- We will also be asking you to bring a drinking vessel to fill up at the various checkpoints to save multi-handling of cups with the commensurate risk of spreading Covid

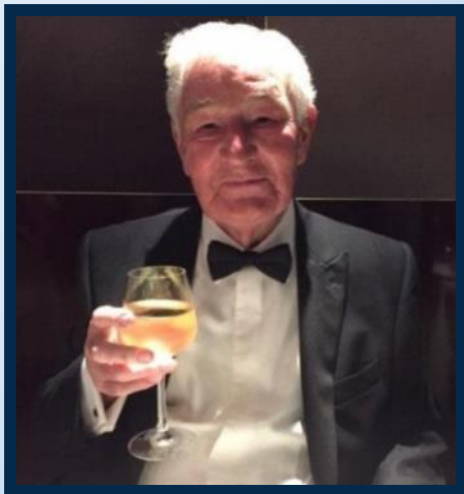
We do hope these inconveniences will not put you off and are hoping for a good turnout after almost 18 months without any real events

We are still finalising the detail but intend to start accepting registrations by Mid May. Why not check out our website <https://wealdofkentrotary.org.uk> to get

Service Rota

Date	Sunday	Church	Time	Service	Readings 1 st 2 nd	
Sun 2 May	Fifth of Easter	Sutton Valence	10.00	Holy Communion	Acts 8:26-40	John 15:1-8
		Chart Sutton	18.00	Evensong	Acts 8:26-40	John 15:1-8
		East Sutton	No Service			
Sun 9 May	Sixth of Easter (Rogation Sunday)	Sutton Valence	10.00	Holy Communion	Acts 10:44-end	John 15:9-17
		Chart Sutton	No Service			
		East Sutton	18.00	Evensong	Acts 10:44-end	John 15:9-17
Sun 16 May	Sunday after Ascension Day	Sutton Valence	10.00	Holy Communion	Acts 1:15-17 & 21-end	John 17:6-19
		East Sutton	No Service			
		Chart Sutton	18.00	Evensong	Acts 1:15-17 & 21-end	John 17:6-19
		East Sutton		Wedding		
Sun 23 May	Pentecost	Sutton Valence	10.00	Holy Communion	Acts 2:1-21	John 15:26-27 & 16:b - 15
		Chart Sutton	No Service			
		East Sutton	18.00	Evensong	Acts 2:1-21	John 15:26-27 & 16:b - 15

BRIAN JONES



It was with great sadness that we heard of the sudden and untimely death of Brian on 11th February. Gladys had taken him for a routine blood test earlier in the week and as he got out of the car, the car began to slide on the ice outside their block of flats (it was that week). He instinctively tried to stop the car, but fell and broke his hip (the one he had had replaced only months before) and his wrist. He was taken to hospital but very sadly died on the operating table a couple of days later, despite heroic efforts by the medical team. He will be greatly missed by Gladys and their families. And us.

Brian was born on 18th February 1938 in Leatherhead. From an early age, he was interested in scouting,

and he was made a Queen's Scout in 1955, receiving the award in St George's Chapel, Windsor, something of which he was justifiably proud. He subsequently represented all Surrey Scouts at the 8th World Scouting Jamboree at Niagara-on-the-Lake, Canada, in August 1955, with 11,000 scouts from 71 countries around the world present. The love of scouting, its principles of helping others and involvement in people stayed with him for the rest of his life.

After four years in the RAF on national service, Brian joined Unilever as a Management Trainee and eventually became Corporate Planner in ten of its UK factories. He then moved to accountancy firm Grant Thornton ultimately becoming National Consultancy Manager, until he retired in 1997. He married a Danish girl in the 1960s and had two daughters, Karen and Sarah, who, with their children, were the joy of his life. The marriage did not last, however, and his wife subsequently died. Brian then met Gladys in 1994 and they were together for 27 years. Apart from scouting, Brian was a Mentor to fledgling businesses through the Prince's Trust, and an Assessor of financial losses of secondary businesses after the foot and mouth disease outbreak in 2001. He volunteered for Cruse Bereavement Care after the London

bombings in 2005 and with the Bishop Simeon Trust which supports the education and development of disadvantaged children in South Africa.

Apart from all this, Brian loved gardening and spent many happy hours in St Mary's churchyard, planting bulbs and ground-cover plants, weeding, pruning and anything else that needed doing. It was while planting bulbs that he fell over his wheelbarrow and broke his hip. Andrew Wishart and I spent a lot of time with him removing undergrowth and fallen tree branches in the churchyard. Some of the time, it has to be said, was spent talking and setting the world to rights over a cup of tea and a biscuit though. Brian was ever willing to volunteer, or be volunteered, to carry out any tasks in the churchyard or the church. His churchyard bonfires were the stuff of legend until they came to a rather peremptory halt when the long arm of the law knocked on his door and gave him some 'advice' on the matter. He was a keen and welcoming sidesperson in the church, he was involved in the Youth Centre, he was Chairman of the Suttons Scout Group (Beavers, Cubs and Scouts), and in between times, he worked on the Neighbourhood Plan

with Sutton Valence Parish Council. He had an eclectic taste in music, and loved above all, cruising. He was a faithful keeper of records and Gladys has said that these revealed that they made 165 trips to every conceivable part of the globe in the 27 years.

Brian had a highly-developed sense of humour, which was never far from the surface, and he was generous not only with his time, but also with his stock of whiskey. We missed them sorely when he and Gladys decided to move back to Surrey.

We miss him even more now. Rest in peace Brian.



Thankyou

I would like say a huge thankyou to everyone for the very kind words, cards, letters and emails and support I have received since Brian died. They have been a great comfort and source of strength to me. Brian and I had 27 very happy years together and we agreed, the nine years we lived in Sutton Valence were 'just us'.

Thank you all again for your wonderful friendship and support.



Is there more to life than this

Alpha

Alpha ...or something like it

One of the things that has been really noticeable over the past year is the increased number of people who have been watching our Facebook posts and who are beginning to take an interest in what is being said. We are therefore wondering how many of you would like to find out more about our faith by taking part in an Alpha (or similar) course. Please contact Fiona (phone number and email address at the front of this magazine) if that includes you, no strings attached – she would love to hear from you.



Chart Sutton has a small but successful shop in the heart of the village on The Green run entirely by volunteers for the benefit of the community.

It is looking for more volunteers to help run it. It is open between 7am-5pm Mon-Fri and 8am-12noon at the weekend and Bank Holidays. Hours to suit, most volunteers do 2 hour stints. There are some permanent slots available but if you would rather be available for ad hoc covering that is fine as there are times when last minute cover is required.

The volunteers are a great bunch who very much enjoy being part of the community, meeting a wide variety of people. If you are interested in becoming part of this team please call either Valerie on **843232** or Jane on **843743** for an informal chat.

Sutton Strollers



Join us and enjoy the glorious countryside around The Three Suttons on the 3rd Sunday of the month.

Contact:

Chris **01622 842629**

Graham **01622 745484**

Have you ever laughed at a joke you did not understand?

Then you are not alone. It seems that two thirds of us have laughed at jokes we did not 'get', simply because we wanted to fit in with our friends at the time.

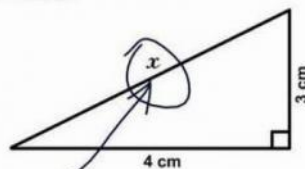
And more than half of us have actually gone on to repeat jokes with punchlines which we don't ourselves understand. More than half of us have even researched a joke in order to try and figure out what was supposed to be so funny about it.

In research done by a British neuroscientist, it was found that humour that relies on puns or more obscure concepts is the most likely to confuse audiences. While laughter is universal, humour is very subjective. People all over the world laugh, but what they find to be funny varies widely, depending on culture, context and language.

During the research, it was found that two of the most misunderstood jokes are:

- *Some Omega-3 vitamins fell on my head when I opened the cupboard. I got super fish oil injuries.*
- *What does a dyslexic, agnostic insomniac do at night? He stays up wondering if there really is a dog.*

3. Find x .



Here it is

How to stay safe this Spring!!

1. Avoid riding in automobiles. They are responsible for 20% of all fatal accidents.
2. Do not stay home. 17% of all accidents occur in the home.
3. Avoid walking on streets or pavements. 14% of all accidents occur to pedestrians.
4. Avoid traveling by air, rail, or water. 16% of all accidents involve these forms of transportation.
5. Of the remaining 33%, 32% of all deaths occur in Hospitals. So, above all else, *avoid hospitals.*

BUT: You will be pleased to learn that only .001% of all deaths occur in worship services in church, and these are usually related to previous physical disorders. Therefore, logic tells us that the safest place for you to be at any given point in time is at church!

A Bible study is safe, too. In fact, the percentage of deaths during Bible study is not even .001%...

So, attend church, and read your Bible - ***IT COULD SAVE YOUR LIFE!***

Noticeboard

100
Club

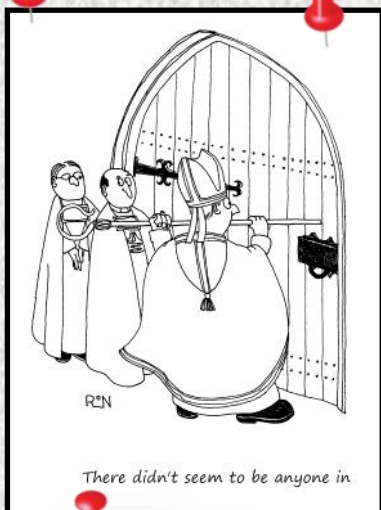
St Mary's Monthly Draw

Winners of the April 2021 draw

First Prize - Mr & Mrs G Higginson

Second Prize - Mr Lionel Marchant

Congratulations!!!



There didn't seem to be anyone in

Baptisms, Blessings & Weddings

With the recent news that the government is hoping to ease the lock down restrictions over the coming months, we are once more in a position to take bookings for Baptisms (Christenings), Blessings & Weddings in church. Please do contact Fiona if you would like to talk about having any of these life celebrations in church.



theWI
INSPIRING WOMEN

For information ring
Rosie **01622 842034**.

From the Registers

Funerals

Funerals

1 April – David Street – East Sutton church

13 April – Hilda Plant – Charing Crematorium

15 April – Michael Hillman – Charing Crematorium



Food Bank

Many thanks to everyone who donates to our Foodbank collection point that is housed in the porch of Headcorn church. Thanks to your generosity we are able to deliver several large bags full of much needed food and toiletries to the Salvation Army Foodbank in Maidstone each week. They in turn, support 70 – 80 needy families in the area, including some in the Suttons. We have also been able to pass on a number of very generous donations that have been used to bulk buy much needed supplies. Current supplies needed are:

- Tinned meat products
- Tinned Fruit
- Long-life Milk
- Cartons of orange/apple juice
- Crisps
- Cereal Bars
- Jams and spreads
- Eggs
- Fruit & vegetables (please call before bringing)
- Toilet Roll
- Toiletries - toothpaste, soap, male/female deodorants (no razors)



Please note that our collection box is covered by CCTV and is emptied each day. Alternatively, please feel free to bring your donation to whichever church you would normally attend on a Sunday.

Although it is still officially springtime I think we all like to imagine that by the middle of this month, as the seeds we sowed in the

ground in late April germinate creating noticeable rows and patches of tiny green leaves, we no longer have to worry about frosty nights and can safely plant out the more tender plants that started life in the greenhouse or on the window sill. However, it is certainly not safe to get too enthusiastic at the beginning of the month; VE Day (May 8) is when I normally plant out my first beans.

I wonder how many creatures were deceived by the exceptionally warm weather at the end of March and woke up from their winter hibernation only to discover that there was still more than a week of not very warm days and very cold nights to come in early April. I didn't see any butterflies but I had reports of Brimstone butterflies having been seen in Holy Week. And I believe there was already plenty of frogspawn in some people's ponds.

As I have to write these jottings before the middle of April there is not much to report about the summer migrant birds we expect to see and/or hear this month; some have arrived but most won't be here until the end of April or early May. And what about our resident birds? I believe that the numbers of

May Jottings



many of them recorded in the annual bird watch earlier this year were down on those recorded last year. I have certainly seen

fewer greenfinches and have yet to see or hear a chaffinch – and I can't blame that entirely on my poor eyesight and hearing which isn't as good as it used to be.

Let's hope that lockdown restrictions continue to be eased and that we are able to live ever more normal, social lives this summer. Doubtless, though, there will still be a few doom mongers advising (if not telling) us to be cautious and to wear face masks and keep our distance if we must go out, reminding us at the same time that it's safer to stay at home. Are we not mature enough to be able to make our own risk assessments?

Michael Beaman

Miscellaneous observations on daily life

The two agencies that redistribute great fortunes are taxation and offspring. - *Anon*

A church council is a gathering of important people who singly can do nothing, but together can decide that nothing can be done. - *Anon*

Live your life and forget your age.
- *Frank Bering*

Give Thanks appeal raises funds for vulnerable people



Christian Aid's latest appeal, which enables people to give thanks for their Covid-19 vaccine and help others in crisis across the world, has raised £130,000.

Many people in the UK are feeling a sense of relief as loved ones receive their vaccines. Christian Aid's Give Thanks appeal encourages people to pass the blessing on, by helping others who have little protection from the pandemic.

Funds from the appeal are helping vulnerable communities around the world access soap, water, food and vital health information as Covid-19 continues to destroy lives and livelihoods. Christian Aid partners have so far directly helped over half a million people in 27 countries.

A donation page has been set up where people can give to Christian Aid's Coronavirus Appeal.



Headcorn Podiatry

Headcorn Podiatry / Chiropody Practice

- Routine Chiropody
- Nail Surgery
- Biomechanical Assessments
- Casted Orthotics
- Diabetic Care
- Rheumatology Care

Please phone today to make an appointment

01622 891691

www.headcornpodiatry.co.uk

2A Station Road , Headcorn TN27 9 SA

18 YEARS IN HEADCORN, RECENTLY MOVED TO NEW FRESH PREMISES

Over 20%
already sold



— THE FUTURE OF — LATER LIVING

If you think you're 'not ready' for retirement community living, think again.

Inspired Villages offer active and busy lifestyles with all you could wish for.

Moving to an Inspired Village like Ledian Gardens, near Leeds Castle, Maidstone, could be the best decision you ever make.

To find out more about Ledian Gardens,
email: jane.shotliff@inspiredvillages.co.uk
or call: **01622 808 538**



RETIREMENT
LIVING OPERATOR
OF THE YEAR

HealthInvestor
Awards 2019
WINNER
Property Investor of the year

The best years of your life?

PENFOLD SURFACING



Permeable Block Paving



Bitumen & Gravel



Tarmac



Resin Bound



New or Refreshing Old Markings



All Types of Markings

**Tel: 0800 699 0522 or
07957 156467**



Proud members of

Checkatrade.com
Where reputation matters

**www.penfoldsurfacing.co.uk
enquiries@penfoldsurfacing.co.uk**



AT YOUR SERVICE



- ACCOMMODATION:** **WHITE HOUSE FARM** - for details of our Self-catering accommodation please see our web site at **www.whitehousefarm-kent.co.uk** or telephone Sue Spain 01622 842490 for more information.
- CARPENTRY/BUILDING:** **Bernard K Hogg** - Carpentry & Building services, Property Refurbishment, Renovation, Extension & all General Carpentry. Established 1982. Telephone 01622 844543 Mobile 07711810981 email: bkhogg@gmail.com
- CHINA:** **JANET'S CHINA HIRE** - Crockery, Cutlery, Glasses, Linen, Ovens etc. For weddings, parties and all occasions. Free washing-up **www.janetschinahire.co.uk**. Tel 01622 844646
- ELECTRICIAN:** **FOREMANS ELECTRICS** - Qualified Part P Electrician specialising in cctv, burglar alarms, showers and house wiring. Telephone 01622 861700/Mobile 07850 103118.
- FARM SHOP:** **EDMED'S FARM SHOP** - East Sutton. Hay, Straw, Shavings, Logs, Coal, Frozen turkey rolls and Feed Wheat available upon request. Please telephone the Farm Office 01622 843219
- FENCING:** **I. WALLOND FENCING** - All types of fencing and gates renewed and repaired. Free estimates. Established 25 years tel 01622 232860 Mobile 07931 368710, **www.iwallondfencingcontractors.co.uk**
- FUNERAL DIRECTORS:** **A.W. COURT** - Headcorn Road, Grafty Green. Tel 01622 850840. Please see our main display advertisement.
- FAMILY FUNERAL SERVICE**, 59 HIGH STREET, HEADCORN, KENT TN27 9QA Tel. 01622 920306 Your only local family owned Funeral Directors.
- GARAGE:** **HILLTOP GARAGE** - North Street Sutton Valence. MOT Testing, servicing and repairs etc. Tel 01622 844545
- Marden Garden Services:** All types of garden maintenance available. Industry qualified with 25 years experience. Telephone Peter on 07865 075205

**MARQUEE/
TOILET HIRE:**

Four Jays – your local supplier of marquees and toilets for events including furniture & chillers, prestige and themed trailer toilets, single toilet cubicles and showers. Site toilets, welfare units and temporary canteens, offices & stores also available for long term hire, plus cesspit, septic and klargestester tank emptying. Tel.: 01622 843135, www.fourjays.co.uk (Barling Farm, East Sutton)

PEST CONTROL:

GOODWINS PEST MANAGEMENT family business with over 25 years experience, covering any pest issues Domestic and Commercial contact us day and evenings **07973982164** www.gpmpest.co.uk

**PODIATRY/
CHIROPODY**

HEADCORN PODIATRY -Jill McVarish.BSc.pod.M; M.Ch.S & Kirstie Clements BSc(Hons).pod. M;M.Ch.S Andrea Wells BSc.(Hons).pod.M; M.Ch.S & Robert Isaacs BSc (Hons) .pod. M; M.Ch.S. All members of the Health Professional Council. Please ring 01622 891691 for an appointment at Headcorn Podiatry.

UPHOLSTERY:

THEOBALD UPHOLSTERY - All types of furniture upholstered and repaired. Cushion replacement service. Furniture made to order. Sundries for DIY enthusiasts. New furniture direct from our showroom from Alstons, Sherborne, Parker Knoll and Celebrity made at craft workshops. No. 5 Slaney Place, Headcorn Road, Staplehurst, Kent. Tel 01580 890055

VEHICLE RECOVERY: HILLTOP GARAGE Tel 01622 844545



KCC Community Wardens

Wardens can offer support, advice and can refer to many partner agencies to help you. Wardens work closely with Kent Police and can also assist in tackling low-level crime and anti-social behaviour (such as graffiti, littering, fly tipping and vandalism).

Your area warden Dawn Riach-Brown - 07773 397125

Area supervisor - Janet Greenroyd - 07773 397131



PROUD TO BE SERVING THE COMMUNITY SINCE 1965

A.W.COURT FUNERAL DIRECTORS



Your fully independent, family owned, Funeral Directors, serving the local community with compassion and the highest standards of service and professionalism.

With our 24-hour emergency service, we are only a telephone call away.

At the earliest stage possible, you will speak directly with one of our experienced Funeral Directors, who will be there to help, support and guide you through the whole of the funeral process.

Golden Charter
Funeral Plans 

Headcorn Road, Grafty Green, Maidstone, Kent ME17 2AP.

01622 850840



Email – enquiries@awcourt.com

Website – www.awcourt.com



A.W. Court is a Trading Division of West & Coe Ltd, 602 Rainham Road South, Dagenham, Essex RM10 8YP.



Award Winning Funeral Directors

Compassionate and caring service for the bereaved day or night

Michael Lawrence DIP FD

Jo Amos
59 High Street
Headcorn
Kent

TN27 9QA
01622 920306

headcorn@familyfuneralservice.net



Invicta Chimney Sweeps

**GUTTER CLEANING SERVICE
NOW AVAILABLE**

- All types of Chimneys swept and smoke tested
- Certificates Issued
- Pots, Cows, Bird Guards etc.
- Birdnest Removal
- Chimney Repairs
- Fully Insured



Bird Cows Fitted

No Mess ~ No Dust ~ No Fuss



Tel: 01622 632641
www.invictachimneysweeps.co.uk
email: invictachimneysweeps@gmail.com



CAPELLI

Come in and enjoy a warm and friendly atmosphere. Be pampered at prices you can afford by our experienced stylists. Brighten your day with a new cut or colour.

For an appointment call
01622 843462
Capelli, High Street,
Sutton Valence



*European & Japanese Car Parts
Classic Car Parts Specialist
Landrover & 4X4 Parts Stocks
Tractor & Machinery Spares
Lawn Mower & Garden Machinery Parts*

**THOUSANDS
OF PARTS FOR
THOUSANDS
OF CARS**



**Oils, Batteries, Braking, Clutches, Hoses, Lighting, Cooling, Radiators,
CV Boots, Drive Shafts, Drive Belts, Filters, Gaskets, Ignition Parts,
Spark Plugs, Shock Absorbers, Steering Parts, Wishbones,
Wiper Blades, Alternators, Starter Motors.**

Visit our shop: **Monday-Friday 8:30-17:30 • Saturday 8:30-12:00**

Where we also stock; Antifreeze, Fluids, Paints, Tools, Accessories, Nuts Bolts & General Hardware

5 Wheeler Street, Headcorn, TN27 9SH
www.psautoparts.co.uk • sales@psautoparts.net
01622 891777



AROUND THE SUTTONS



Clubs, Societies and Activities

EAST SUTTON CRICKET CLUB	Mr N Edmed	01622 843219
EAST SUTTON COMMUNITY YOUTH THEATRE	Mr M Dyer-Ball	01622 844321
EAST SUTTON WHIST DRIVE	Mr R Morgan	01622 843955
ROYAL BRITISH LEGION	Mr M Fitzgerald	01622 743270
SUTTON SAINTS FOOTBALL CLUB	Janet Burnett	01622 844135
SUTTON VALENCE CHORAL SOCIETY	Mr A Hutchinson	01622 843325
SUTTON VALENCE GARDENERS ASSOCIATION	Mr D.Gallafant	01622 842439
SUTTON VALENCE HOCKEY CLUB	Mr L Davies	01622 844046
SUTTON VALENCE KARATE CLUB	Mr S Pereira	07768 388163
SUTTON VALENCE MUSIC SOCIETY	Mrs A Hutchinson	01622 843325
SUTTON VALENCE TABLE TENNIS CLUB	Mr A Collins	01580 892755
SUTTON VALENCE TENNIS CLUB	Mrs J Waterman	01622 768654
SUTTON VALENCE WOMENS INSTITUTE	Mrs R Easton	01622 842034
THE SUTTONS BEAVER SCOUTS	Samantha Chapman	07809 135501
THE SUTTONS BROWNIES	Mrs S Smith	01622 730680
THE SUTTONS CUB PACK	Mrs L Waring	01622 843112
THE SUTTONS SCOUT TROOP	Mr T Waring	07754 701086
THREE SUTTONS DARBY & JOAN CLUB	Mrs M Mackleden	01622 861783
WARMLAKE SHORT MAT BOWLS	Mrs B French	01622 843560
WEALD OF KENT PRESERVATION SOCIETY	Mrs M Jones	01622 890119
SUTTON STROLLERS	Mr C Webb	01622 842629

CARPETS

**SUPPLY & FITTING SERVICE WITH
HOME SELECTION
OVER 30 YEARS
EXPERIENCE**



**ALAN POULTON
Tel. 01622 843019**

AROUND THE SUTTONS - LOCAL TELEPHONE DIRECTORY

BOROUGH COUNCILLORS

Sutton Valence	Cllr. Wendy Young	01622 842917
Chart Sutton	Cllr. Steve Munford	01622 741310
East Sutton	Cllr. Martin Round	01622 890276
	Cllr. Karen Chappell-Tay	079186 75619

CLERKS TO THE PARISH COUNCILS

Chart Sutton	Mrs T. Jenkins	01622 745043
East Sutton	Mrs J. Burnett east Sutton parish council@gmail.com	01622 844135
Sutton Valence	Mrs J. Burnett clerk@suttonvalence.org.uk	01622 844135

DOCTORS

Cobtree Medical Practice		01622 843800
Langley Surgery		01622 863030
Sutton Valence Surgery		01622 842212
On Call Care : 0845 1552255	NHS Direct : 0845 4647	
Maidstone Hospital		01622 729000

POLICE COMMUNITY SUPPORT OFFICERS

101

THREE SUTTONS HELPLINE

M.844301

M.842346

01622 842346

NEIGHBOURHOOD WATCH

Support Line

01622 604396

SCHOOLS

Sutton Valence School	Head: Mr B Grindlay	01622 845200
Sutton Valence Preparatory School	Head: Miss C Corkran	01622 842117
Sutton Valence Primary School	Head: Miss M Terry	01622 842188
Sutton Valence Pre-School	Mrs F Davidson	01622 842388

KENT MESSENGER REPRESENTATIVES

Sutton Valence - Mrs J Burnett	clerk@suttonvalence.org.uk	01622 844135
Chart Sutton - Mrs V Underdown	valerie95@outlook.com	01622 843232

VILLAGE HALL HIRE BOOKINGS

East Sutton Filmer Hall	Mrs J Coyle	07703 815215
Chart Sutton	Annegret Fidock (csvillagehall@hotmail.com)	01622 844741
Sutton Valence	Mrs J Burnett (svvhbookings@gmail.com)	01622 842024
Youth Centre (behind St Mary's Church)	Graham Haskett (temporary arrangement)	01622 891804

HEADCORN AND THE SUTTONS

www.handschurches.org

SUTTON VALENCE VILLAGE WEBSITE

www.suttonvalencepc.kentparishes.gov.uk

EAST SUTTON PARISH COUNCIL WEBSITE

www.eastsuttonpc.kentparishes.gov.uk



G. Shrubb

TREE SURGERY

www.gshrubbtreesurgery.co.uk

NPTC Qualified, Fully Insured

Expert tree care:

07545 614606

Free written estimates:

01622 828038

Your Complete Veterinary Care

6 Westerhill Road
Coxheath
Maidstone
ME17 4DG

Tel: 01622 743888

www.coxheathvets.co.uk

Opening Hours

Mon - Fri 8.00am to 7.00pm

Saturday 8.00am to 12.00pm

Consultations by appointment only



VINYL RECORDS, CDS & MEMORABILIA BOUGHT

Top prices paid for LPs, Singles, CDs, Autographs,
Music Memorabilia, Concert Programmes and more!

Pop • Rock • Metal • Prog

Punk • Jazz • Blues • Folk

WE COLLECT!

Call Glen on: 0800 345 7551 or 07808 131171

Email: buyers@eil.com

eil.com – Kent based since 1987



HAVEN FARM SHOP & POST OFFICE

Drop & Go «» Shopping Returns «» eTop-Up «» Cash
Deposits & Withdrawals «» Euros «» Moneygram
«» Car Tax



Fine Foods

Local Fruit &
Veg

Confectionery
and
Drinks

Cook «» Kentish Mayde «» Korkers
«» Milk «» Eggs «» Honey
Stawberries «» Raspberries «» Cherries



Monday to
Saturday
8am - 6pm

Sunday
10am - 4pm



Madeleine Rose

**AGENTS *for* FINE
COUNTRY HOMES & COTTAGES**

**Your local independent agent
in Sutton Valence.**

Established since 1996 our niche guarantees us a
forum to sell and rent unique character homes
in village and rural locations.

So, whether your are looking to buy, sell, or rent,
Madeleine Rose stands out from the crowd,
offering first class service.

Contact our offices at Bower House, Sutton Valence

01622 844 455 www.madeleine-rose.com

sales – sv@madeleine-rose.com

lettings – lettings@madeleine-rose.com

