



WEALD VIEWS

In the Three Suttons

April 2020

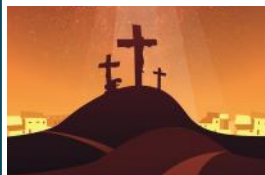
50p

“As we share with the Christian world their Easter celebration, let us also share in the sense of hope which is one of the most important message of Easter – the others being peace, atonement and renewal of life. “

Cathrine Margit Moller

In this time of dread, we must all be good Samaritans: Archbishop of Canterbury JUSTIN WELBY and Archbishop of York JOHN SENTAMU says we should be looking out for our friends and neighbours during coronavirus crisis.

Source - Mail Online



*“Andrà tutto bene”
everything will be all right.*



East Sutton Church



New Beginnings

St Peter & St Paul,
East Sutton Road,
East Sutton,
Kent ME17 3DE



CHURCH OFFICERS OF:

**ST. MARY'S,
SUTTON VALENCE**

**SS. PETER & PAUL,
EAST SUTTON**

**ST. MICHAEL'S,
CHART SUTTON**

Vicar THE REV'D FIONA HASKETT

fiona.haskett@btopenworld.com **01622 891804**

Benefice website: **www.handschurches.org**

Churchwardens

Mr G. James
01622 842681
Mr S. Pereira
01622 843146

Mrs N. Worsfold
01622 843101
Mrs J Ireland
01622 891058

Hon. Secretary PCC

Mrs G Gray
01622 844973

Ms H. Knowler
01622 749012

Hon. Treasurer PCC

Mr S. Pereira
01622 843146

Mr A. Hutchinson
01622 843325

Mr C Webb
01622 842629

Organist

Mr G. James
01622 842681

Mr G. James
01622 842681

Captain of Bells

Mr N. Hodgson
01622 863337

Ms H. Knowler
01622 749012

CLERGY LETTER

Dear Friends

As I write this letter, the whole country seems to be swathed in an atmosphere of fear and anxiety over the possible effects of the Covid - 19 Coronavirus. What should we be doing for the best? Should we go to this/ that/the other? Should we be cancelling various events where people gather together in significant numbers? And of course, where on earth are we going to buy our loo rolls and hand sanitiser from? The chances are, by the time you read this, many of those questions will have been answered.....and no doubt, replaced by several more. None of us likes uncertainty and we are definitely in a situation where that is the case now.

I don't know if you are aware, but the coronavirus gets its name from a distinctive corona or 'crown' of sugary-proteins that projects from the envelope surrounding the particle. This, you probably won't be surprised to learn, reminds me of another "crown" that all Christians around the world are very much aware of at this time of year.

The crown of thorns worn by Christ at his crucifixion.

But, there are some enormous differences between the "crown" worn by the Corona virus and that worn by Christ. As already mentioned, the



former is leading to fear and uncertainty, it is likely to lead to infection, illness and sadly possibly worse. However, the crown worn by Christ has the potential to lead to exactly the opposite.

When we look at the crown of thorns we are reminded of Jesus Christ, the Son of God, who despite all the

aggression and animosity that was levelled against him, never gave in to any fear or uncertainty that he may have been feeling as he made his journey to the cross. He never stopped loving those around him and he even asked forgiveness for those who had conspired to put him to death. Of course, the crown of thorns should also remind us of something else – Christ's final victory over sin and death. Rather than fear and uncertainty, this crown should surely symbolise confidence and joy.

So what does that mean for us? Well I believe there are several things.

For a start, there is the fact that no matter what we are going through, no matter how uncertain or fearful we might be feeling, we know that Christ himself would have felt the same.

Because of that, he will be understanding how we feel, indeed he will be suffering with us and for us in our own anxieties. But I don't believe that

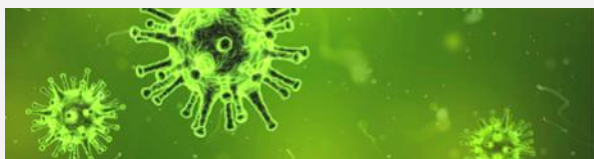
Continued on next page....

he will simply leave it at that, because I believe that he will also be there alongside us to help and support us, to give us comfort in times of trouble, confidence in times of uncertainty and the hope and assurance of eternal life with him after our journey through this flawed and fractured world is over. All we need do, is turn to him, acknowledge his presence and accept his unfailing love and support.

I pray that you will all have the certainty of a happy & Blessed Easter – regardless of what Covid - 19 might throw at us.

Fiona

Covid -19 Coronavirus



With the spread of the Covid -19 Corona Virus we would encourage everyone to take all reasonable steps to protect themselves – especially if they are frail or have any underlying health issues. Although we, at our three churches in the Suttons, have already put in place a number of protocols, including the suspension of the common communion cup, we are aware that for some people, it would still be safer to stay at home and self isolate.

We would therefore like to assure you that we would fully support any such decisions. We would also like to add, that there are several of us who would be more than happy to collect prescriptions or go shopping etc for anyone who feels they shouldn't leave the relative safety of their own home – simply phone Fiona or one of the church wardens and we will ensure that someone is there to help you.

WEALD VIEWS

Editor	wealdviews@hotmail.co.uk	Graham Haskett	01622 891804
Advertising	brianjones38@aol.com	Brian Jones	01622 844089
Distribution	goverjames50@gmail.com	Mr G James	01622 842681
Subscriptions	brianjones38@aol.com	Brian Jones	01622 844089

The final deadline for the submission of material is the 14th of the preceding month. Acceptable formats for articles are MS Word, MS Publisher or text files. PDF files can sometimes be used, but as their proportions cannot be altered without distortion, they can't always be used. Suitable picture formats include: Jpeg, BMP, PNG, GIF, etc.

Breaking News - IMPORTANT ANNOUNCEMENT

As a result of the increased risk posed by the Coronavirus the Church of England has decided to suspend all non essential worship in our churches until the current crisis is over.

We will endeavour to ensure that there is access to Spiritual, Worship and Pastoral support for all those who would appreciate it. Available from our Facebook page, Website, or we can provide a "hard copy".

St Peter & St Paul's Headcorn and St Mary's Sutton Valence will continue to remain open for private prayer and reflection during daylight hours.

Please do not hesitate to contact Fiona if she can be of any help.

From church notice-sheets:

This being Easter Sunday, we will ask Mrs Brown, our children's minister, to come forward and lay an egg on the altar.

Baptisms: after Easter, the North and South ends of the church will be utilised. Children will be baptised at both ends.

Coming up: Theological Open House. We discuss thought-provoking topics. Your opinions are hardly welcome.

Next Sunday Mrs Brown will sing a solo at the morning service before the vicar preaches on the subject of 'Terrible experiences and how to survive them'.

Players picked for St Andrew's darts team will be pinned to the board on Thursday.

Family

A mother and son were washing dishes while the father and daughter were watching TV in the family room. Suddenly, there was an almighty crash of breaking dishes, then complete silence. The girl looked at her dad and said, "It was Mum."

"How do you know?" asked her father in amazement.

"She didn't say anything."



*Helen went to church three weeks running,
so she was co-opted to the P.C.C.*



DO YOU WANT TO RAISE MONEY FOR A CHOSEN CAUSE AS WELL AS FOR CANCER RESEARCH UK?

CAN YOU WALK 1 MILE?

If so, join us on our 35th ANNIVERSARY NORTH DOWNS WALK

DATE: Sunday, June 14th 2020

START & FINISH: Harrietsham Village Hall, Church Road – ME17 1AP

CHECK-IN OPEN: 8.00am to 11.00am

OPTIONS: 1, 3, 6 or 9 mile route across the beautiful North Downs

FOR FURTHER DETAILS call **07519320919** or visit www.wealdofkentrotary.org.uk

On completion all walkers are given a free Ploughman's Lunch, strawberries and cream and are entertained by a local Jazz Band.

Refreshments provided at 5 checkpoints – we even provide drinking bowls for your dogs.

See the website for Maps/Poster/Route Details/Registration Forms etc. all of which may be downloaded.

Apart from the beautiful scenery the event has the added bonus that walkers may retain 50% of their sponsorship money for their own charity/church/school etc. with the remainder going to CRUK.

Alternatively, you may register at the Hall on the day for a suggested donation of £15 per person.

To-date this Walk has raised over £500,000 for local & national charities, with almost £300,000 for CRUK alone.

ALL COSTS are underwritten by our sponsors



so every penny raised goes to charity.

Keith and Jean's Garden Jottings



We are sure you are all looking forward to better weather in the not too distant future! Somehow fresh air seems even more important doesn't it?

The usual April regime would be : Plant gladioli and dahlias. Support tall growing perennials, like delphiniums, lupins and campanulas.

Sow seeds of annual flowers and sweet peas outside where you would like them to flower, and prepare beds for planting out tender summer bedding.

Mow lawns weekly. Apply a combined lawn weed, feed and moss killer to give grass growth a boost. Rake out moss and dead material. Use seed to repair bare patches.

Sow tomatoes, courgettes, marrow, sweet corn and French beans in pots indoors to plant out in late May. A wide range of salad and vegetable crops can be sown directly outside now, subject of course to our weather!

Prune forsythia and flowering currants as soon as flowering is over. Remove a proportion of the oldest stems to encourage new growth from the base. Cut back others to control size and shape.

Roses : Finish pruning and

feed. Fertilise and hoe into top layer of soil.

VEGETABLES it is suggested that you use **CROP ROTATION** for your vegetables using a three year rotation. Identify a sufficient area for the following three groups and then rotate them accordingly.

Legumes We use peas and beans, plus sweet corn, onions leeks and salads.

Brassicas – Cabbages, Brussels sprouts, broccoli, cauliflower, plus swede and turnip.

Root vegetables Carrots, parsnips, beetroot, plus marrows cucumbers potatoes and tomatoes.

Crop rotation is vital for success in allotments or large scale vegetable plots. You will need to divide your plot into three and grow each of the above groups in its own area. Each year move everything onto the next space, so that the same crops never grow in the same ground for more than one year in three. There is less risk of plants contracting root diseases and each year, the different crops will receive exactly the right type of soil preparation and will benefit from the nutrients the last crop has left in the ground.

We hope the above is helpful to you and not too confusing to follow! Find a suitable spot for your cuppa. It is possible it might have to be indoors again!

Best wishes from Keith and Jean

St Michael's Church, Chart Sutton



Well, we're nearly through Lent, and for one I won't be sorry to see Easter come. As I mentioned in the last edition, I am trying out a "Wartime Rationing" diet, and it's hard! As I write, I'm a couple of weeks in and the really hard bit is the snacks – there's nothing snackable in the cupboard. That and the wine; imports were difficult during the war so wine is off the menu, beer was available so I've taken to that instead, but it's just not the same. I've also been trying to avoid imported fruit and veg, so no citrus or bananas. We'll see if I make it to Easter without too many big fails! It may be a bit artificial, but I'm beginning to get an idea of how

monotonous it was and how scary when rationed items start to run out...

In contrast, our Pancake Service in mid-February was good fun, and a lot of pancakes were eaten! Thank you to everyone who came and ate pancakes or helped out. By the time you read this we will be coming to the end of the Lent groups which have been running

on a weekly basis – and we will also have had our fund raising jumble sale at the village hall. Thanks for all the jumble!

Churchyard Maintenance – Please do join us on one of our regular maintenance mornings, which are planned for 9.30am on each of the following Saturdays. You bring the muscle, we'll bring the doughnuts!

- 6th June
- 5th September
- 7th November

HeatherSt Michael's PCC

Let's plant a tree

We could ask our local council to plant a tree on our street. So advises the Royal Horticultural Society (RHS) who has recently announced that the majority of the Britain in Bloom finalists are in urban areas.

This is the competition's 56th year, and rather than simply judging on the beauty of the flowers planted, towns are this year winning points for increasing the number of trees in their centres.



Each of the 70 finalists will be visited by a pair of RHS judges in August, who will decide the winners of medals, categories and the Champion of Champions. Of these 70 finalists, nearly two-thirds are in urban areas where trees and plants have been used to regenerate high streets. Leeds, Blackburn, and Paddington, London, are among the 10 finalists that have been 'greening' their central shopping and business hubs.

So – in the meantime, why don't we ask the local council about planting that tree?

Sutton Valence Gardeners Association

2019 once again proved to be a successful year for our association in spite of, or perhaps because of, the mixed wet & dry weather that we experienced.

Our two shows (Spring, and Autumn were packed with a fantastic array of flowers, plants, vegetables, handicrafts and cookery.

In addition to the shows, there were three talks which ranged from Steve Edney Head Gardner at The Salutation Sandwich talking about his fantastic experiences creating this wonderful garden through to Glynn Bareham with fantastic photography through to Melanie Gibson Barton talking on the gardens of Flanders. Best of all, these talks are free to members.

Our coach outing was to Pashley Manor with tea and scones on the way at Merriments Garden Centre. Our annual dinner was at the Weald of Kent which was very well attended.

Spring Show

Sunday 5th April 2020

Sutton Valence village Hall 2.15pm

Members: please do your best to enter the Show so that we can make a lovely display for everyone to see. If you have any questions or queries please contact the Show Secretary or any Committee members.

The Show is open to the public at 2.15pm for everyone to enjoy. You do not have to be a member to come along and enjoy the Show. After looking round please enjoy a cup of tea and a slice of cake (small cost) and there is a raffle to support too.

If you would like to become a member of SVGA then please see us at the Show.

Membership is £5.00 per year and members can enjoy some discounts at Rumwood Nursery, Warmlake Nursery, Millbrook Garden Centre and Homeleigh Timber.

Future events

This year our talks are by Simon Pollard, Sue Davies and Jane Scotchmer. Our outing this May is to the newly opened and extensively refurbished Grade One Listed Leonardslee Gardens Near Horsham. For those who have never been Spring is the best time to go to see amazing displays of azaleas, rhododendrons, magnolias and bluebells to name but a few. Tickets £25 pp.

- Coach trip to Leonardslee Sunday 10th May.
- Annual dinner at The Weald of Kent Friday 5th June.

If you are interested in either of these then contact any Committee members or Secretary Ross Vaughan **01622 693837**.

Hope to see you at the Spring Show

Children's colouring competition
Any children can enter the children's colouring competition - their parents do not have to be members.

Please email Ross on:

rvaug@madasafish.com for some pictures to colour and then bring them along on the morning of the Show (5th April).

If you would like more information, please contact me on the following:

Email **dgallafant@btinternet.com**

Telephone **07712 667757** or **01622 842439**

Ross Vaughan & David Gallafant

The spread of Coronavirus



Thorough and frequent hand washing with soap and water is recommended by the World Health Organisation as the first step to prevent the spread of the Coronavirus.

I don't know who first said, "Cleanliness is next to Godliness", but you won't find that phrase in the Bible. Ritual washings are practised by many religions, but they usually signify spiritual cleansing, not physical sanitisation. Piety isn't a substitute for hygiene, nor vice versa.

The Coronavirus, now called Covid-19, has been a daily news item for months, with the result that fear is spreading more rapidly than the disease itself. Stock markets throughout the world have plummeted; sales of disinfectant have soared. Sports fixtures have been cancelled, whole towns have been quarantined and worldwide trade is threatened.

Statistics change hourly, so anything quoted here will be out of date by the time you read it, but we need to put this plague (if that is what it is) into perspective. Do you remember the Ebola epidemic which swept through regions of Africa from 2014 onwards? More than one in three sufferers died from that virus, but there's now a vaccine which can be used when Ebola threatens. Past influenza pandemics have been nowhere near as

Continued on page 11

Our walk on the 4th March started at Egerton and Paula and I had carried out the risk assessment on the previous Wednesday only to find that one of the fields we were due to cross had been ploughed. Thirteen of us set off on the shorter walk across fields and along lanes. Wednesday was cloudy and dry and quite warm for the time of year. We took time to look at the masses of daffodils that were in flower down in a valley. It was lovely morning out.

April walks

Wednesday 1st April Meet at 'The potting shed' pub Langley ME17 3LZ in the overflow car park at 9.30 for 9.45am start. For a 90 min. circular walk from Langley to Otham, mostly on country lanes and



footpaths. It passes through fields and orchards with some interesting houses. There is one stile and only gentle inclines.

Wednesday 22nd April Meet at Headcorn Village Hall 9.30 for 9.45am start for a 45min. walk around the village.

Wednesday 29th April Meet at the Parish Car Park Pluckley Hill Pluckley TN27 0QS 9.30 for 9.45am start for a 3.9mile (about 2 hours) walk over farmland, bridleways, footpaths, woodland and orchards. There are about three stiles and some gradients.

Directions; coming up Forge Hill turn right into the Car Park signed Black Horse (PH) and straight ahead into Parish Car Park.

Barry Walker

barry@watersideeast.com

severe. 'Asian Flu' in 1957, led to 3,550 deaths in England and Wales, or something like 2.4% of actual cases. In 2009, the fatality figure for the swine flu epidemic was about 0.026%. The figures for today's Covid-14 virus suggest that around 80% of cases are mild, 14% develop severe symptoms, 4% become critically ill and the death rate is 2%.

This virus was first publicised by Doctor Li Wenliang, who was detained and censured by the Chinese police for "spreading false rumours". Although he himself

subsequently died of the disease, there can be no doubt that his courage saved many lives. There are echoes here of words from St John's Gospel: "Greater love has no one than this: to lay down one's life for one's friends." As for the people of China where the virus originated, the Bishop of Newcastle, Christine Hardman, tweeted a Sri Lankan poster, which shows the right Christian attitude. It says, "HATE THE VIRUS, NOT THE CHINESE. Let's pray for them instead".

Amen. And do wash your hands.

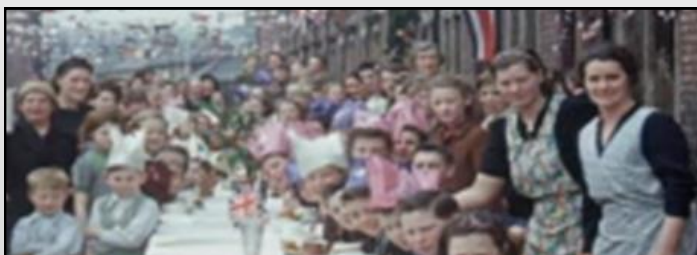


The Royal British Legion Sutton Valence and District Branch

We will never see the likes of the Second World War generation again. We have recently had the 75th anniversary with the Liberation of Auschwitz, which was a poignant and timely reminder of the atrocities that took place there and in other areas of Europe both before and during the 1939-45 War.

What of our own country? Britain was never invaded of course, but the events of Victory in Europe (VE) Day on May 8th are firmly etched into our history books as well as the six years war that had proceeded it

The 75th Anniversary of V E Day takes place this year. It is to be a celebration and commemorated nationally, and our traditional May Day Bank Holiday on May 4th will now be transferred to Friday 8TH May so the whole country can join in.



**Our next Branch Meeting is Monday 6th April at 7.00 pm
in the Sutton Valence School Cafe**

Mike FitzGerald MBE Chair Telephone 01622 743270 mikefitzgerald2018@outlook.com

April must be one of the most eagerly awaited months of the year but this year many of those things we normally look forward to seeing in April will already have come and gone. At the beginning of last month I read that a pair of mistle thrushes had raised four chicks that were just about ready to leave the nest which their parents must have started building in January. Mind you, they weren't like most of their species rural birds; they were in Leeds and had chosen a set of traffic lights in that city as a good place to build their nest!

If the main concern for many of us in February was the wet and windy weather, last month was all about the spread of coronavirus. It will already have disrupted the daily lives of many people and many businesses will have suffered financially. For the increasing number of people who

April Jottings



Mistle Thrush

need to self isolate life is likely to be particularly difficult and so it's not surprising that there has been a bit of panic buying, not just of food but also of other items such as tissues.

I made a note to look out for last month's full moon which was a super moon, i.e. one that occurs when

the moon is closest to the earth. It is significantly bigger and brighter than a full moon that occurs when the moon is furthest away from the earth. (Like the earth's orbit around the sun, that of the moon around the earth is elliptical and the distance between the moon and the earth and between the earth and the sun therefore varies. It so happens that the earth is closest to the sun in the northern hemisphere winter but not close enough to have any really noticeable effect.)

Michael Beaman

Passionflower

Why is the passionflower called the passionflower? This beautiful climbing plant that grows in many of our gardens, was discovered in South America by Spanish missionaries centuries ago. Drawings were sent back to Europe and in 1609 an Italian priest interpreted the flower to



represent the crucifixion, otherwise known as the Passion.

The five petals and five sepals represent the 10 disciples who remained steadfast (Judas and Peter both abandoned Jesus). The corona is the crown of thorns. The stigma is the cross or

nails, and the five stamens are the number of wounds Jesus received.

The big surprise lurking in your Granny's chicken soup

Granny always knew her chicken soup was good for you when you were poorly, but she did not realise quite *how* good.

Now research has found that the traditional hot broths used in many cultures to battle flu and fevers pack a bigger punch than even the cooks realised.

A range of soups, ranging from vegetable to beef and chicken, were discovered to have the power to interrupt the life cycle of



Plasmodium falciparum, which causes 99 per cent of deaths from malaria. Some of them were actually as effective as a leading antimalarial drug, dihydroartemisinin, in fighting malaria.

No one particular ingredient was found to be common to the broths, but there certainly seems to be “evidence that they contain antibiotic properties”, according

to one doctor. The study was carried out at the Imperial College London. and Great Ormond Street Hospital.

Sutton Valence Village Hall Needs Your Help

Last year we made an impassioned plea for people to join the Village Hall Committee to help support and keep our Village Hall running. Unfortunately, although people expressed their support and even made financial donations, we did not in the end have anyone new join our committee.

Sutton Valence Village Hall is a registered Charity. All Committee members are volunteers and function as Trustees. The Hall's insurance policy includes trustee indemnity cover for the trustees.

Committee members are involved in all aspects of decision making for the benefit of the Hall. Although it is not necessary to take on a specific responsibility, the Committee is made up of The Chairperson, Vice Chair, Treasurer and Secretary in addition to non-named roles. We meet about three to four times a year generally but may be asked to convene for special meetings from time to time. With the new heating system installed we do not have any new major projects in

view.

Aside from the day-to-day running of the Hall, we also like to run events to raise funds – our quiz nights have proved popular over the years, but new ideas are always welcome.

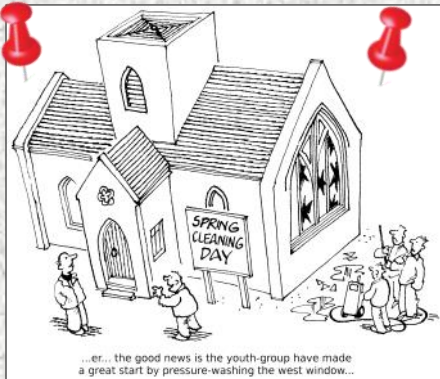
We would like to see Sutton Valence Village Hall continuing to be a valued asset for all users for years to come. As such we are asking for your help to share with your members our request for volunteers to step forward in any capacity to help us on the Village Hall Committee.

If you or you know someone who might be willing to help with the Hall please contact me on **01622 842217**, or via our website **www.suttonvalencevillagehall.com** and we will be happy to discuss further.

For the Sutton Valence Village Hall Committee

Derrick Parkes, Treasurer

Noticeboard



Rotary Club of the Weald of Kent
ART & CRAFT
EXHIBITION & SALE 2020
AT SUTTON VALENCE SCHOOL ME17 3HL

Saturday 4th April – from 11am - 6pm

Sunday 5th April – from 10am - 5pm

Entrance £1 includes catalogue - Refreshments available

All proceeds go to Rotary Charities

For Information call: Derek Lamb 01622 890 650 or

Email: artshowr@gmail.com

www.wealdofkentrotary.org.uk

LOCAL HISTORY

2pm - 4.30pm

Chart &...



History

Bookstall, Ray...

100
Club

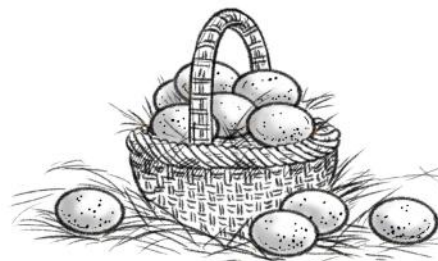
St Mary's
Monthly Draw

Winners of the March 2020
draw

First Prize - Mr Lionel Marchant

Second Prize - Mr & Mrs G Higginson

Congratulations!!!



n like a
HURCH?

or Fiona on

1804

t you there!



GOD QUESTIONS

A series of informal gatherings to talk about our differing views of God and to ask those questions we never thought we could ask before. "No holds barred"

All welcome—whether you are a regular churchgoer or not.

Please contact Fiona for more details.

HISTORY DISPLAY

pm Saturday 23rd May
Sutton Village Hall



Cream Teas

Archives Display

Hfle, Bring & Buy, Plants

A RARE OPPORTUNITY TO JOIN A
BALLROOM AND LATIN BEGINNERS
DANCE CLASS RIGHT AT THE START

ONLY £5 FOR A SESSION

DANCE STYLE ARE STARTING A NEW
CLASS IN ULCOMBE VILLAGE HALL

WEDNESDAY NIGHTS 7.45pm

INTERESTED?

RING ROD 01622 845938



theWI
INSPIRING WOMEN

Sutton Valence WI will meet on Tuesday 14th April at 7.30pm in the Village Hall. Fred Lemont will be speaking about the Flemish weavers. The competition will be for an ornate

button. Visitors and new members are always welcome. JUMBLE SALE - Saturday 25th April 11am in the Village Hall. Come and find a bargain. For information ring Rosie **01622 842034**.



Chart Sutton has a small but successful shop in the heart of the village on The Green run entirely by volunteers for the benefit of the community.

It is looking for more volunteers to help run it. It is open between 7am-5pm Mon-Fri and 8am-12noon at the weekend and Bank Holidays. Hours to suit, most volunteers do 2 hour stints. There are some permanent slots available but if you would rather be available for ad hoc covering that is fine as there are times when last minute cover is required.

The volunteers are a great bunch who very much enjoy being part of the community, meeting a wide variety of people. If you are interested in becoming part of this team please call either Valerie on **843232** or Jane on **843743** for an informal chat.

Sutton Strollers



Join us and enjoy the glorious countryside around The Three Suttons on the 3rd Sunday of the month.

Contact:

Chris **01622 842629**

Graham **01622 745484**

VINYL RECORDS, CDS & MEMORABILIA BOUGHT

Top prices paid for LPs, Singles, CDs, Autographs,
Music Memorabilia, Concert Programmes and more!

Pop • Rock • Metal • Prog

Punk • Jazz • Blues • Folk

WE COLLECT!

Call Glen on: 0800 345 7551 or 07808 131171

Email: buyers@eil.com

eil.com – Kent based since 1987

The Three Suttons
Helpline has been

The Three Suttons Helpline

operating as a "good neighbour" scheme for about 20 years to make life easier for those needing to get to medical appointments, but who do not have their own transport or cannot easily be helped by family or friends and for whom public transport is infrequent and not a viable option. This scheme covers the villages and surgeries in Sutton Valence,

Chart Sutton, East Sutton,
Kingswood and Langley.

If anyone would like to use the scheme, please telephone one of the following numbers: **844301 842530 842346**

If you have any other queries or if you feel that you may like to help, please contact Christine Parkes. (email:

christineparkes@hotmail.com or tel. **842217**

CARPETS

**SUPPLY & FITTING SERVICE WITH
HOME SELECTION
OVER 30 YEARS
EXPERIENCE**



**ALAN POULTON
Tel. 01622 843019**

*Compassionate and caring service
for the bereaved day or night*

THE FUNERAL SERVICE
Family
IN MAIDSTONE



Michael Lawrence
Funeral Director

Jo Amos
59 High Street, **HEADCORN**, TN27 9QA
Tel: 01622 962001
headcorn@familyfuneralservice.net

AWARD WINNING FUNERAL DIRECTOR

Kim Barton
4 Cavendish Way, **BEARSTED**, Maidstone, ME15 8PW
Tel: 01622 260200
bearsted@familyfuneralservice.net

www.familyfuneralservice.net



WE HAVE DONATED OVER £20,000 TO LOCAL CHARITIES IN RECENT YEARS

Over 20%
already sold



— THE FUTURE OF — LATER LIVING

If you think you're 'not ready' for retirement community living, think again.

Inspired Villages offer active and busy lifestyles with all you could wish for.

Moving to an Inspired Village like Ledian Gardens, near Leeds Castle, Maidstone, could be the best decision you ever make.

To find out more about Ledian Gardens,
email: jane.shotliff@inspiredvillages.co.uk
or call: **01622 808 538**



RETIREMENT
LIVING OPERATOR
OF THE YEAR

HealthInvestor
Awards 2019
WINNER
Property Investor of the year

The best years of your life?



G. Shrubb

TREE SURGERY

www.gshrubbtreesurgery.co.uk

NPTC Qualified, Fully Insured

Expert tree care:

07545 614606

Free written estimates:

01622 828038

J&J Construction & Son

All aspects of building and roofing work undertaken. *Fully Insured*

- Driveways • Patio • Paths
- Brickwork • Roofing • Fencing
- Ground work

Call Jimmy on:

07867 682140

01622 920117

PROUD MEMBERS OF

Checkatrade.com
Where reputation matters



Headcorn Podiatry

Headcorn Podiatry / Chiropody Practice

- Routine Chiropody
- Casted Orthotics
- Nail Surgery
- Diabetic Care
- Biomechanical Assessments
- Rheumatology Care

Please phone today to make an appointment

01622 891691

www.headcornpodiatry.co.uk

2A Station Road , Headcorn TN27 9 SA

18 YEARS IN HEADCORN, RECENTLY MOVED TO NEW FRESH PREMISES



AT YOUR SERVICE



- ACCOMMODATION:** **WHITE HOUSE FARM** - for details of our Self-catering accommodation please see our web site at **www.whitehousefarm-kent.co.uk** or telephone Sue Spain 01622 842490 for more information.
- CALOR GAS/APPLIANCES:** **S.M OFFEN** - Lake Farm Sutton Valence Tel 01622 842104. Full range Propane, Butane, Piping, Fittings, Gaz, Heater Sales/Service. Weekly deliveries, Open Mon-Sat 8am - 6pm, Sundays 8am - 1pm.
- CARPENTRY/BUILDING:** **Bernard K Hogg** - Carpentry & Building services, Property Refurbishment, Renovation, Extension & all General Carpentry. Established 1982. Telephone 01622 844543 Mobile 07711810981 email: bkhogg@gmail.com
- CHINA:** **JANET'S CHINA HIRE** - Crockery, Cutlery, Glasses, Linen, Ovens etc. For weddings, parties and all occasions. Free washing-up **www.janetschinahire.co.uk**. Tel 01622 844646
- DOMESTIC CLEANING SERVICES** **A's Cleaning Maids (Kent) Ltd** - Domestic Cleaning Services Andrea Kerr-Thomson - 01732 761771 or 07834 854812 **www.ascleaningmaids.co.uk** Call or E-mail your enquiry: andrea@ascleaningmaids.co.uk
- ELECTRICIAN:** **KEVIN J COULTER** - Approved electrician. Installations Industrial and Domestic, ECA and Part P member. Tel 01622 842144. Evenings best. **FOREMANS ELECTRICS** - Qualified Part P Electrician specialising in cctv, burglar alarms, showers and house wiring. Telephone 01622 861700/Mobile 07850 103118.
- FARM SHOP:** **EDMED'S FARM SHOP** - East Sutton Tel 01622 843219. Local farm produce, potatoes, straw,hay, shavings, turkeys, handmade crafts, fruit juices and homemade preserves.
- FENCING:** **I. WALLOND FENCING** - All types of fencing and gates renewed and repaired. Free estimates. Established 25 years tel 01622 232860 Mobile 07931 368710, **www.iwallondfencingcontractors.co.uk**
- FUNERAL DIRECTORS:** **A.W. COURT** - Headcorn Road, Grafty Green. Tel 01622 850840. Please see our main display advertisement. **FAMILY FUNERAL SERVICE**, 59 HIGH STREET, HEADCORN, KENT TN27 9QA Tel. 01622 962001 Your only local family owned Funeral Directors.

- GARAGE:** **HILLTOP GARAGE** - North Street Sutton Valence. MOT Testing, servicing and repairs etc. Tel 01622 844545
- MARQUEE/TOILET HIRE:** **Four Jays** – your local supplier of marquees and toilets for events including furniture & chillers, prestige and themed trailer toilets, single toilet cubicles and showers. Site toilets, welfare units and temporary canteens, offices & stores also available for long term hire, plus cesspit, septic and klargester tank emptying. Tel.: 01622 843135, www.fourjays.co.uk (Barling Farm, East Sutton)
- OSTEOPATH** **HEADCORN NATURAL HEALTH CENTRE** - Anna Reeve, Jenny Watson & Alastair Dunbar, Registered Members of the General Osteopathic Council. Headcorn Natural Health Centre, 1-2 Frank's Bridge Cottages, Smarden Road, Headcorn. Telephone: 01622 890803 www.hnhc.org and email: hnhc12@gmail.com
- PEST CONTROL:** **SMARDEN PEST CONTROL** - G D MORRIS Rodent and all insect control. Fast, prompt and confidential service. Residential, commercial and industrial. 01233 770458, day and evenings. www.smardenpestcontrol.co.uk
- PODIATRY/ CHIROPODY** **HEADCORN PODIATRY** -Jill McVarish.BSc.pod.M; M.Ch.S & Kirstie Clements BSc(Hons).pod. M;M.Ch.S Andrea Wells BSc.(Hons).pod.M; M.Ch.S & Robert Isaacs BSc (Hons) .pod. M; M.Ch.S. All members of the Health Professional Council. Please ring 01622 891691 for an appointment at Headcorn Podiatry.
- UPHOLSTERY:** **THEOBALD UPHOLSTERY** - All types of furniture upholstered and repaired. Cushion replacement service. Furniture made to order. Sundries for DIY enthusiasts. New furniture direct from our showroom from Alstons, Sherborne, Parker Knoll and Celebrity made at craft workshops. No. 5 Slaney Place, Headcorn Road, Staplehurst, Kent. Tel 01580 890055
- VEHICLE RECOVERY:** **HILLTOP GARAGE** Tel 01622 844545

KCC Community Wardens

Kent County Council Community Wardens are able to assist with any issues or concerns you may have. Wardens can offer support, advice and can refer to many partner agencies to help you. Wardens work closely with Kent Police and can also assist in tackling low-level crime and anti-social behaviour (such as graffiti, littering, fly tipping and vandalism). Wardens encourage communities to work together to build stronger and safer communities.

Your area warden Dawn Riach-Brown - 07773 397125

Area supervisor - Janet Greenroyd - 07773 397131





*European & Japanese Car Parts
Classic Car Parts Specialist
Landrover and 4x4 Parts Stockist
Tractor & Machinery Spares
Lawn Mower and Garden Machinery Parts*

1000's of Parts for Millions of Cars.

Antifreeze, Oils, Batteries, Braking, Clutches, Hoses,
Lighting, Cooling, Radiators, CV Boots, Drive Shafts, Drive
Belts, Filters, Gaskets, Ignition Parts, Spark Plugs,
Shock Absorbers, Steering Parts, Wishbones, Wiper
Blades, Alternators, Starter Motors.

Visit our Shop – Monday – Friday 08:30 – 17:30, Saturday 08:30 – 12:00
where we also stock Oil, Antifreeze, Fluids, Paints, Tools, Accessories

5 Wheeler Street, Headcorn, TN27 9SH
Telephone 01622 891777, 01622 891303
Web: www.psautoparts.co.uk Email psautoparts@outlook.com



SUTTON VALENCE CHORAL SOCIETY with THE BERESFORD SINFONIA SPRING CONCERT



**SUNDAY 29 March 2020 AT 7:00 pm
ALL SAINTS CHURCH, MAIDSTONE**

Two greats from the past and one modern composer

The church will be filled with the sound of the 18-year-old **Schubert's Mass in G major**. Then, to celebrate the 250th anniversary of his birth, the Society tackles **Beethoven's C major Mass**. The icing on the cake in this programme is the inclusion of **Cecilia McDowall's Ave Maris Stella**. This is a winner of a programme and is not to be missed.

You are encouraged to purchase your tickets at an early point. At **£13.00**, they are available from choir members, by phone at **01622 861313**, by email from pamela.hipkins@btinternet.com, on the website at www.suttonvalencechoral.com and on the door on the night.

Invicta Chimney Sweeps

**GUTTER CLEANING SERVICE
NOW AVAILABLE**

- All types of Chimneys swept and smoke tested
- Certificates Issued
- Pots, Cows, Bird Guards etc.
- Birdnest Removal
- Chimney Repairs
- Fully Insured



Bird Cows Fitted

No Mess ~ No Dust ~ No Fuss



Tel: 01622 632641

www.invictachimneysweeps.co.uk
email: invictachimneysweeps@gmail.com



CAPELLI

Come in and enjoy a warm and friendly atmosphere. Be pampered at prices you can afford by our experienced stylists. Brighten your day with a new cut or colour.

For an appointment call
01622 843462
Capelli, High Street,
Sutton Valence

lime
properties



We are Letting and Property Management Specialists providing professional and friendly guidance through the ever-changing and challenging regulations. We make the process simple, allowing you time to sit back and relax.



Lime Properties where your house becomes their **home...**



01622 745 987
www.LimePropertiesKent.co.uk





AROUND THE SUTTONS



Clubs, Societies and Activities

EAST SUTTON CRICKET CLUB	Mr N Edmed	01622 843219
EAST SUTTON COMMUNITY YOUTH THEATRE	Mr M Dyer-Ball	01622 844321
EAST SUTTON WHIST DRIVE	Mr R Morgan	01622 843955
MOTHERS UNION	Mrs G Smith	01622 842530
ROYAL BRITISH LEGION	Mr M Fitzgerald	01622 743270
SUTTON SAINTS FOOTBALL CLUB	Janet Burnett	01622 844135
SUTTON VALENCE CHORAL SOCIETY	Mr A Hutchinson	01622 843325
SUTTON VALENCE GARDENERS ASSOCIATION	Mr D.Gallafant	01622 842439
SUTTON VALENCE HOCKEY CLUB	Mr L Davies	01622 844046
SUTTON VALENCE KARATE CLUB	Mr S Pereira	07768 388163
SUTTON VALENCE MUSIC SOCIETY	Mrs A Hutchinson	01622 843325
SUTTON VALENCE TABLE TENNIS CLUB	Mr A Collins	01580 892755
SUTTON VALENCE TENNIS CLUB	Mrs J Waterman	01622 768654
SUTTON VALENCE WOMENS INSTITUTE	Mrs R Easton	01622 842034
THE SUTTONS BEAVER SCOUTS	Mrs C Hampson	01622 862894
THE SUTTONS BROWNIES	Mrs S Smith	01622 730680
THE SUTTONS CUB PACK	Mrs L Waring	01622 843112
THE SUTTONS SCOUT TROOP	Mr T Waring	07754 701086
THREE SUTTONS DARBY & JOAN CLUB	Mrs M Mackleden	01622 861783
WARMLAKE SHORT MAT BOWLS	Mrs B French	01622 843560
WEALD OF KENT PRESERVATION SOCIETY	Mrs M Jones	01622 890119
SUTTON STROLLERS	Mr C Webb	01622 842629



"The organist isn't too sure about it,
he says he can't play that fast."



MAKE MONEY

Financial freedom
Recession proof
Extra income
Your own business
More spare time
Hours to suit you
Free training

SAVE MONEY

Gas and Electricity
Broadband
Mobile
Home Phone
CashBack on petrol and shopping
UK's cheapest online shopping
One simple monthly bill

Contact Carole Wright for details: carole.uwclub@gmail.com
www.utilitywarehouse.org.uk/N34752 M:07885167166

AROUND THE SUTTONS - LOCAL TELEPHONE DIRECTORY

BOROUGH COUNCILLORS

Sutton Valence	Cllr. Wendy Young	01622 842917
Chart Sutton	Cllr. Steve Munford	01622 741310
East Sutton	Cllr. Martin Round	01622 890276
	Cllr. Karen Chappell-Tay	079186 75619

CLERKS TO THE PARISH COUNCILS

Chart Sutton	Mrs T. Jenkins	01622 745043
East Sutton	Mrs J. Burnett east Sutton parish council@gmail.com	01622 844135
Sutton Valence	Mrs J. Burnett clerk@suttonvalence.org.uk	01622 844135

DOCTORS

Cobtree Medical Practice		01622 843800
Langley Surgery		01622 863030
Sutton Valence Surgery		01622 842212
On Call Care : 0845 1552255	NHS Direct : 0845 4647	
Maidstone Hospital		01622 729000

POLICE COMMUNITY SUPPORT OFFICERS

101

THREE SUTTONS HELPLINE

M.844301

M.842530

01622 842346

NEIGHBOURHOOD WATCH

Support Line

01622 604396

SCHOOLS

Sutton Valence School	Head: Mr B Grindlay	01622 845200
Sutton Valence Preparatory School	Head: Miss C Corkran	01622 842117
Sutton Valence Primary School	Head: Miss M Terry	01622 842188
Sutton Valence Pre-School	Mrs F Davidson	01622 842388

KENT MESSENGER REPRESENTATIVES

Sutton Valence - Mrs J Burnett	clerk@suttonvalence.org.uk	01622 844135
Chart Sutton - Mrs V Underdown	valerie95@outlook.com	01622 843232

VILLAGE HALL HIRE BOOKINGS

East Sutton Filmer Hall	Mrs J Coyle	07703 815215
Chart Sutton	Annegret Fidock (csvillagehall@hotmail.com)	01622 844741
Sutton Valence	Mrs J Burnett (svvhbookings@gmail.com)	01622 842024
Youth Centre (behind St Mary's Church)	Graham Haskett (temporary arrangement)	01622 891804

HEADCORN AND THE SUTTONS

www.handschurches.org

SUTTON VALENCE VILLAGE WEBSITE

www.suttonvalencepc.kentparishes.gov.uk

EAST SUTTON PARISH COUNCIL WEBSITE

www.eastsuttonpc.kentparishes.gov.uk

SERVING THE COMMUNITY SINCE 1965

A.W.COURT

FUNERAL DIRECTORS

(Proprietor: West & Coe Ltd)

Your local family owned Funeral Directors, offering the highest standard of care and facilities to every family we serve.

*Golden Charter
'Independent Way'
A Funeral Plan
created for you.*

Headcorn Road, Grafty Green,
Maidstone, Kent ME17 2AP

01622 850840

Your Complete Veterinary Care

6 Westerhill Road
Coxheath
Maidstone
ME17 4DG

Tel: 01622 743888

www.coxheathvets.co.uk

Opening Hours

Mon - Fri 8.00am to 7.00pm

Saturday 8.00am to 12.00pm

Consultations by appointment only



HEADCORN NATURAL Health Centre

Osteopathy
Acupuncture
Hypnotherapy
Bowen Therapy
Beauty Therapy
Massage / Baby Massage
Counselling
Kinesiology
Reflexology
Pilates / Yoga
Tai Chi / Qigong



01622 890803

www.hnhc.org

hnhc12@gmail.com

1-2 Frank's Bridge Cottages, Smarden Road, Headcorn TN27 9SX



HAVEN FARM SHOP & POST OFFICE

Drop & Go «» Shopping Returns «» eTop-Up «» Cash
Deposits & Withdrawals «» Euros «» Moneygram
«» Car Tax



Fine Foods

Local Fruit &
Veg

Confectionery
and
Drinks

Cook «» Kentish Mayde «» Korkers
«» Milk «» Eggs «» Honey
Stawberries «» Raspberries «» Cherries



Monday to
Saturday
8am - 6pm

Sunday
10am - 4pm



Madeleine Rose

**AGENTS *for* FINE
COUNTRY HOMES & COTTAGES**

**Your local independent agent
in Sutton Valence.**

Established since 1996 our niche guarantees us a
forum to sell and rent unique character homes
in village and rural locations.

So, whether your are looking to buy, sell, or rent,
Madeleine Rose stands out from the crowd,
offering first class service.

Contact our offices at Bower House, Sutton Valence

01622 844 455 www.madeleine-rose.com

sales – sv@madeleine-rose.com

lettings – lettings@madeleine-rose.com

